

# HDMI CAMERAS



## XCAM4K Series HDMI/NETWORK /USB Multi-outputs C-mount CMOS Camera

The XCAM4K series **HDMI Camera** is the next-generation live-view imaging-system with 4K resolution(Video) at 60 FPS. It comes with Sony Exmor CMOS sensor with high sensitivity, low dark current and no smear achieved through the adoption of R, G and B primary color mosaic filters.

The Camera uses a standard C-mount interface for maximum compatibility with various microscopy-systems. It can be used as a stand-alone recorder when used with an HDMI monitor or television, or live-streamed to a PC via Gigabit Ethernet (LAN) for image-capture and video-recording.

Hardware 3D denoising, sharpness and tone mapping control functions greatly improve the image and video quality.

The included Windows software offers image-development and measurement tools, as well as advanced compositing features such as image-stitching and extended-depth-of-focus. With the ability to calibrate scales at multiple magnifications, the software can be used for multi-level inspection. For Mac and Linux, there is a lite version of the software which can capture video and still images, and includes limited processing features.

The HDMI 4K series Camera is intended to be used for the acquisition of digital images from the stereo microscope, biological microscope or online interactive teaching.

- Sony Exmor CMOS sensor
- 4K HDMI/LAN/WLAN/USB multiple video outputs
- 4K/1080P auto switching according to the display resolution
- SD card/USB flash disk for the captured image and video storage
- Embedded XCAMView for the control of the camera
- With strong ISP and other related processing functions
- ToupView/ToupLite software for PC
- iOS/Android applications for smart phones or tablets
- Windows/Linux/macOS/Android multiple platforms SDK;

### Related Models

Model in Stock XCAM4K 8MPA

| Order Code  | Sensor & Size(mm)                      | Pixel (μm) | G Sensitivity<br>Dark Signal           | FPS/Resolution   | Binning | Exposure<br>(ms) |
|-------------|--|------------|--|--|---------|------------------|
| XCAM4K8MPA  | 4K/Sony IMX334(C)<br>1/1.8"(7.68x4.32) | 2.0x2.0    | 505mv with 1/30s<br>0.13mv with 1/30s  | 60@3840*2160(HDMI)<br>30@3840*2160(NETWORK)<br>30@3840*2160(USB) | 1x1     | 0.04~2000        |
| XCAM4K8MPB  | Sony IMX485(C)<br>1/1.2"(11.14x6.26)   | 2.9x2.9    | 2188mv with 1/30s<br>0.39mv with 1/30s | 60@3840*2160(HDMI)<br>30@3840*2160(NETWORK)<br>30@3840*2160(USB) | 1x1     | 0.04~2000        |
| XCAM4K16MPA | Sony IMX183(C)<br>1/1.06"(13.06x7.34)  | 2.4x2.4    | 461mv with 1/30s<br>0.21mv with 1/30s  | 30@3840*2160(HDMI)<br>30@3840*2160(NETWORK)<br>15@5440*3060(USB) | 1x1     | 0.04~2000        |

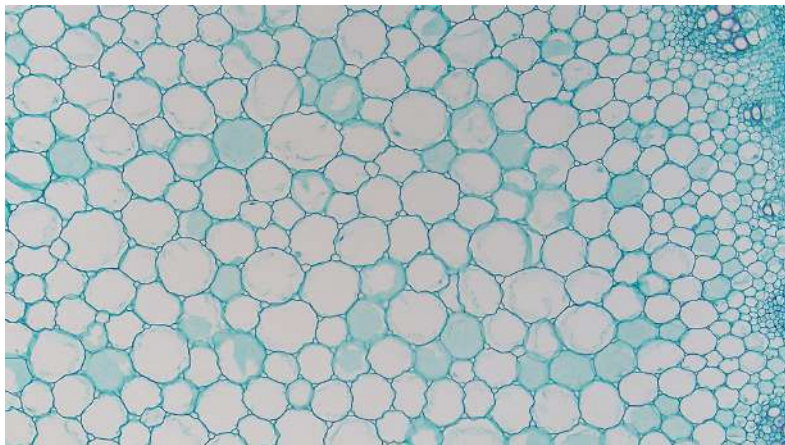
# Specification

| Interface or Button                                      | Function Description  |
|--|---|
| USB Mouse  | Connect USB mouse for easy operation with embedded XCamView software.   |
| USB3.0   | Connect USB flash drive to save pictures and videos (Host Mode).<br>Connect 5G WiFi module to transfer video wirelessly in real time(AP/STA, Host Mode) ;<br>Connect computer with USB connection to transfer video in real time(Device Mode) ;         |
| HDMI   | Comply with HDMI2.0 standard. 4K/1080P format video output and supporting automatic switch between 4K and 1080P format according to the connected monitors.,  |
| LAN  | LAN port to connect router and switch to transfer video.  |
| SD   | Comply with SDIO3.0 standard and SD card could be inserted for video and images saving.   |
| ON/OFF   | Power switch.   |
| LED  | LED status indicator.   |
| DC12V  | Power adapter connection (12V/1A).  |
| Video Output Interface                                   | Function Description  |
| HDMI Interface   | Comply with HDMI2.0 standard;<br>60fps@4K or 60fps@1080P(XCAM4K8MPA, XCAM4K8MPB);<br>30fps@4K or 60fps@1080P(XCAM4K16MPA);  |
| LAN Interface  | 30ps@4K resolution, support real time resolution switching;<br>H264/H265 encoded video;<br>Bandwidth adjustment in real time;<br>DHCP configuration or manual configuration;<br>Unicast/multicast configuration;  |
| WiFi Interface   | Connecting 5G WiFi adapter (USB3.0 slot) in AP/STA mode (Host Mode);  |
| USB3.0 Slot  | Connecting USB3.0 port of PC for video transfer (Device Mode); MJPEG format video;  |
| Other Function   | Function Description  |
| Video Saving   | Video format : 8M(3840*2160) H264 encoded MP4 file;<br>Video saving frame rate : 50~260fps(XCAM4K8MPA, XCAM4K8MPB) (related with SD card and video resolution);<br>26~30fps(XCAM4K16MPA) (related with SD card and video resolution);                   |
| Image Capture  | 8M (3840*2160, XCAM4K8MPA, XCAM4K8MPB) JPEG/TIFF image in SD card or USB flash drive;<br>16M (3840*2160, XCAM4K16MPA) JPEG/TIFF image in SD card or USB flash drive.  |
| Measurement Saving                                       | Measurement information saved in different layer with image content;<br>Measurement information is saved together with image content in burn in mode.   |
| ISP Function   | Exposure(Automatic / Manual Exposure) / Gain, White Balance(Manual / Automatic / ROI Mode), Sharpening, 3D Denoise, Saturation Adjustment, Contrast Adjustment, Brightness Adjustment, Gamma Adjustment, Color to Gray, 50HZ/60HZ Anti-flicker Function |
| Image Operation  | Zoom In/Zoom Out(Up to 10X), Mirror/Flip, Freeze, Cross Line, PIP (Picture in Picture), Compare(Comparison between real time video and images in SD card or USB flash drive ), Embedded Files Browser, Video Playback, Measurement Function             |
| Embedded RTC(Optional)                                   | To support accurate time on board   |
| Restore Factory Settings                                 | Restore Camera parameters to its factory status   |
| Multiple Language Support                                | English / Simplified Chinese / Traditional Chinese / Korean / Thai / French / German / Japanese / Italian   |
| Software Environment under NETWORK/WiFi/USB Video Output |   |
| White Balance  | Auto White Balance  |
| Color Technique  | Ultra-Fine Color Engine   |
| Capture/Control SDK                                      | Windows/Linux/macOS/Android Multiple Platform SDK(Native C/C++, C#/VB.NET, Python, Java, DirectShow, Twain, etc)  |
| Recording System   | Still Picture or Movie  |
| Operating System   | Microsoft® Windows® XP / Vista / 7 / 8 / 8.1 /10(32 & 64 bit)<br>OSx(Mac OS X) Linux  |

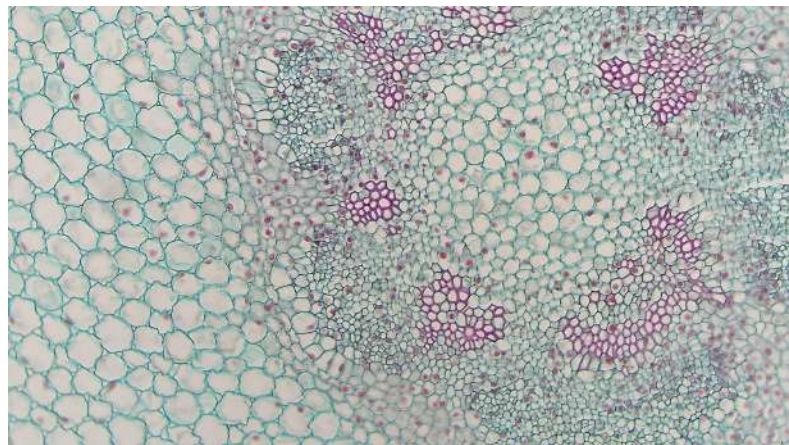
|  |  |
|--|--|
| PC Requirements                        | CPU: Equal to Intel Core2 2.8GHz or Higher |
|  | Memory: 4GB or More                        |
|  | Ethernet Port: RJ45 Ethernet Port          |
|  | Displayer: 19" or Larger                   |
|  | CD-ROM                                     |
| <b>Operating Environment</b>           |  |
| Operating Temperature (in Centidegree) | -10°~ 50°                                  |
| Storage Temperature (in Centidegree)   | -20°~ 60°                                  |
| Operating Humidity                     | 30~80%RH                                   |
| Storage Humidity                       | 10~60%RH                                   |
| Power Supply                           | DC 12V/1A Adapter                          |



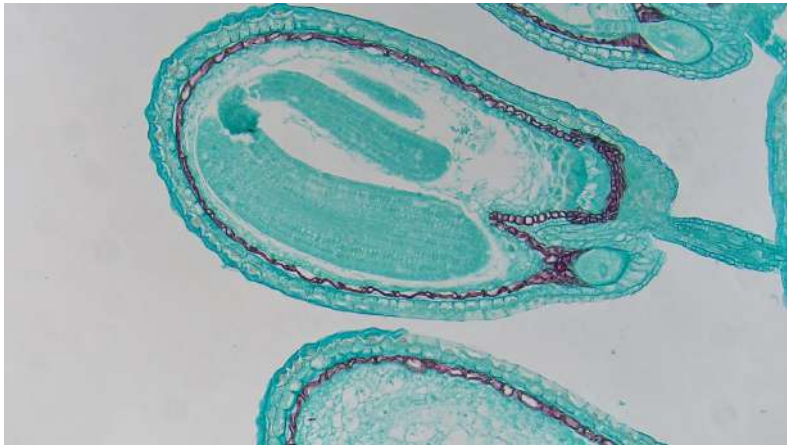
## Instance



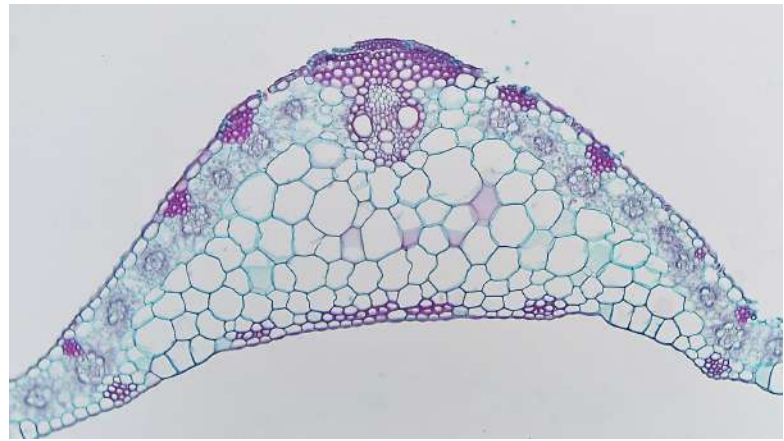
Alfalfa Stem



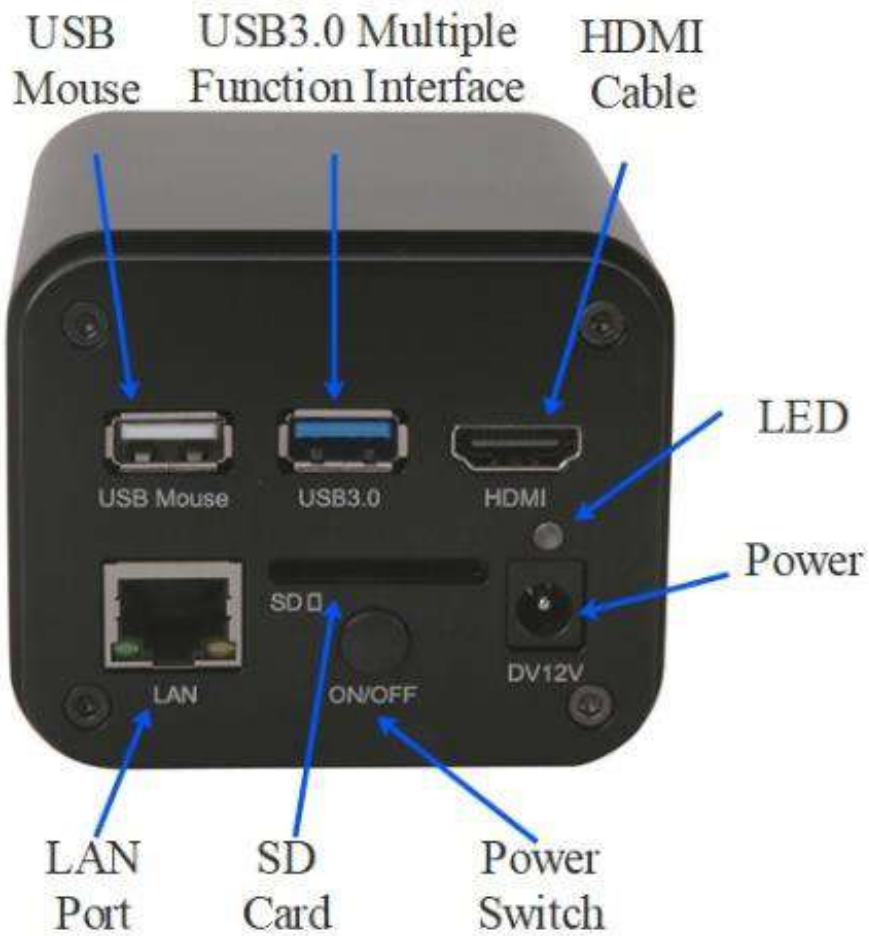
Broad Bean Root



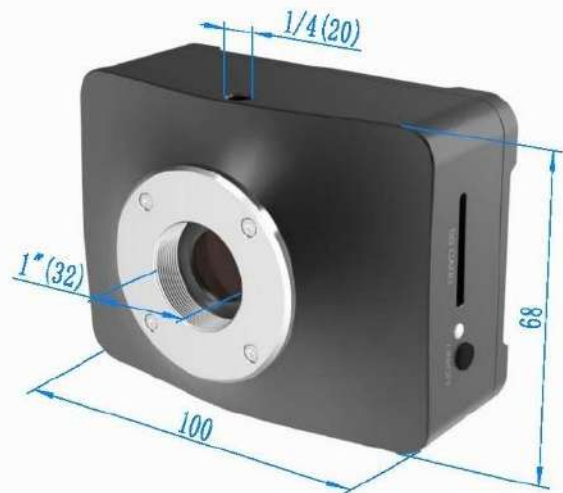
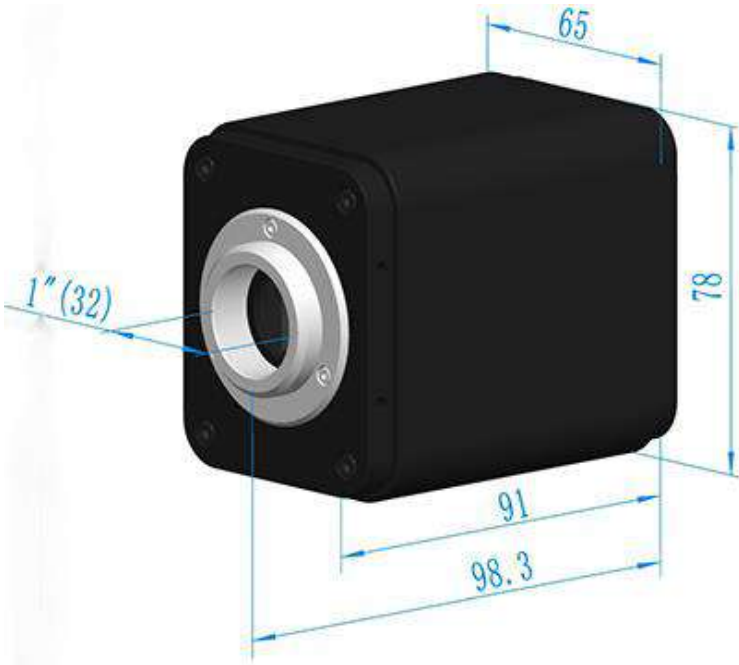
Capsella Older Embryo



Corn Leaf



# XCAM4K Camera Dimensions



## Packing List



# Packing List



## XCAM4K Series Camera Packing Information(Cubic and Flat Shape)

| Standard Packing List |  |  |   |
|-----------------------|--|--|---|
| A                     | Gift box : L:25.5cm W:17.0cm H:9.0cm (1pcs, 1.57Kg/ box)   |  |   |
| B                     | XCAM4K series camera(Square or flatened)   |  |   |
| C                     | Power Adapter: Input: AC 100~240V 50Hz/60Hz, Output: DC 12V 1A<br>American standard: Model: GS12U12-P1I 12W/12V/1A: UL/CUL/BSMI/CB/FCC<br>European standard: Model:GS12E12-P1I 12W/12V/1A; TUV(GS)/CB/CE/ROHS<br>EMI Standard: EN55022, EN61204-3, EN61000-3-2,-3, FCC Part 152 class B, BSMI CNS14338<br>EMS Standard: EN61000-4-2,3,4,5,6,8,11, EN61204-3, Class A Light Industry Standard |  |   |
| D                     | USB Mouse  |  |   |
| E                     | HDMI 2.0 Cable(Support 3840x2160, 60FPS)   |  |   |
| F                     | High-speed USB3.0 A male to A male gold-plated connectors cable /2.0m  |  |   |
| G                     | CD (Driver & utilities software, Ø12cm)  |  |   |
| Optional Accessory    |  |  |   |
| H                     | SD Card (16G or above; Speed: Class 10)  |  |   |
| I                     | USB WiFi adapter   |  |   |
| J                     | Ethernet cable   |  |   |
| K                     | Adjustable lens adapter  | C-Mount to Dia.23.2mm eyepiece tube<br>(Please choose 1 of them for your microscope)                                   | 108001/AMA037<br>108002/AMA050<br>108003/AMA075 |
| L                     | Fixed lens adapter   | C-Mount to Dia.23.2mm eyepiece tube<br>(Please choose 1 of them for your microscope)                                   | 108005/FMA037<br>108006/FMA050<br>108007/FMA075 |
|                       | Note: For K and L optional items, please specify your Camera type (C-mount, microscope camera or telescope camera), Touptek engineer will help you to determine the right microscope or telescope camera adapter for your applications;  |  |   |
| M                     | 108015(Dia.23.2mm to 30.0mm ring)/Adapter rings for 30mm eyepiece tube   |  |   |
| N                     | 108016(Dia.23.2mm to 30.5mm ring)/ Adapter rings for 30.5mm eyepiece tube  |  |   |
| O                     | Calibration kit  | 106011/TS-M1(X=0.01mm/100Div.);<br>106012/TS-M2(X,Y=0.01mm/100Div.);<br>106013/TS-M7(X=0.01mm/100Div., 0.10mm/100Div.) |   |